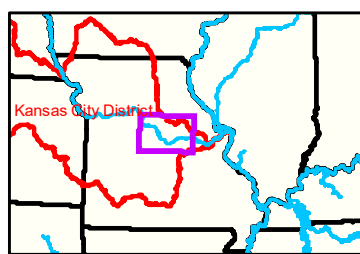


Notes

Boonville Gage = 7.3 at time of collection 19 October 2020

Gage_L



LEGEND

	< 8		< 8 ft		Green Passing		Green		AIS Green CAN
	8 - 9		8 - 9 ft		Red Passing		Red		AIS Red NUN
	9 - 9.5		9 - 10 ft		Green Crossing		Green CAN		Green CAN
	9.5 - 10		10 - 12 ft		Red Crossing		Red		Red NUN
	10 - 12		River Mile						
	12 - 14		Sailing Line						
	14 - 16		BSNP Structure						
	> 16		Levee						

Buoy

	Green		AIS Green CAN
	Red		AIS Red NUN
	Green CAN		Green CAN
	Red NUN		Red NUN

Junction

	Green
	Red
	Junction

Scale: 0, 312.5, 625, 937.5, 1,250, 2,500 Feet

Compass rose showing North, South, East, West.

NOTES:
 Horizontal Coordinate System:
 World Geodetic System of 1984 (WGS84), projected to the Universal Transverse Mercator (UTM) Zone 15 North. Units in U.S. Survey Feet

Vertical Datum:
 Soundings are shown in feet and indicated depths are referenced to water surface at time of collection.

The information depicted on this map represents the results of a survey conducted on the date indicated and can only be considered to represent the general condition existing at that time.

The location of navigation aids are based on and provided by the U.S. Coast Guard.



DISCLAIMER: The U.S. Army Corps of Engineers (USACE) provides this information for informational purposes only. It is not intended for navigation or other critical applications. The information is provided as a service to the public and is not guaranteed. The user assumes all responsibility for the use of this information. The USACE is not liable for any damages, including consequential damages, arising from the use of this information.

KANSAS CITY DISTRICT MISSOURI RIVER AREA OFFICE	
Submitted By:	MRAO
Reviewed By:	MRAO
Approved By:	MRAO

Survey Information

MO_02_LMR
 MO_02_LMR_20201019_CS_177_5_179_0_SORT
 19 October 2020

Sheet Number
 35 of 46

38°53'N

38°53'N

Notes

Boone County

Moniteau County

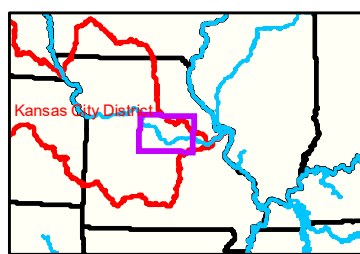
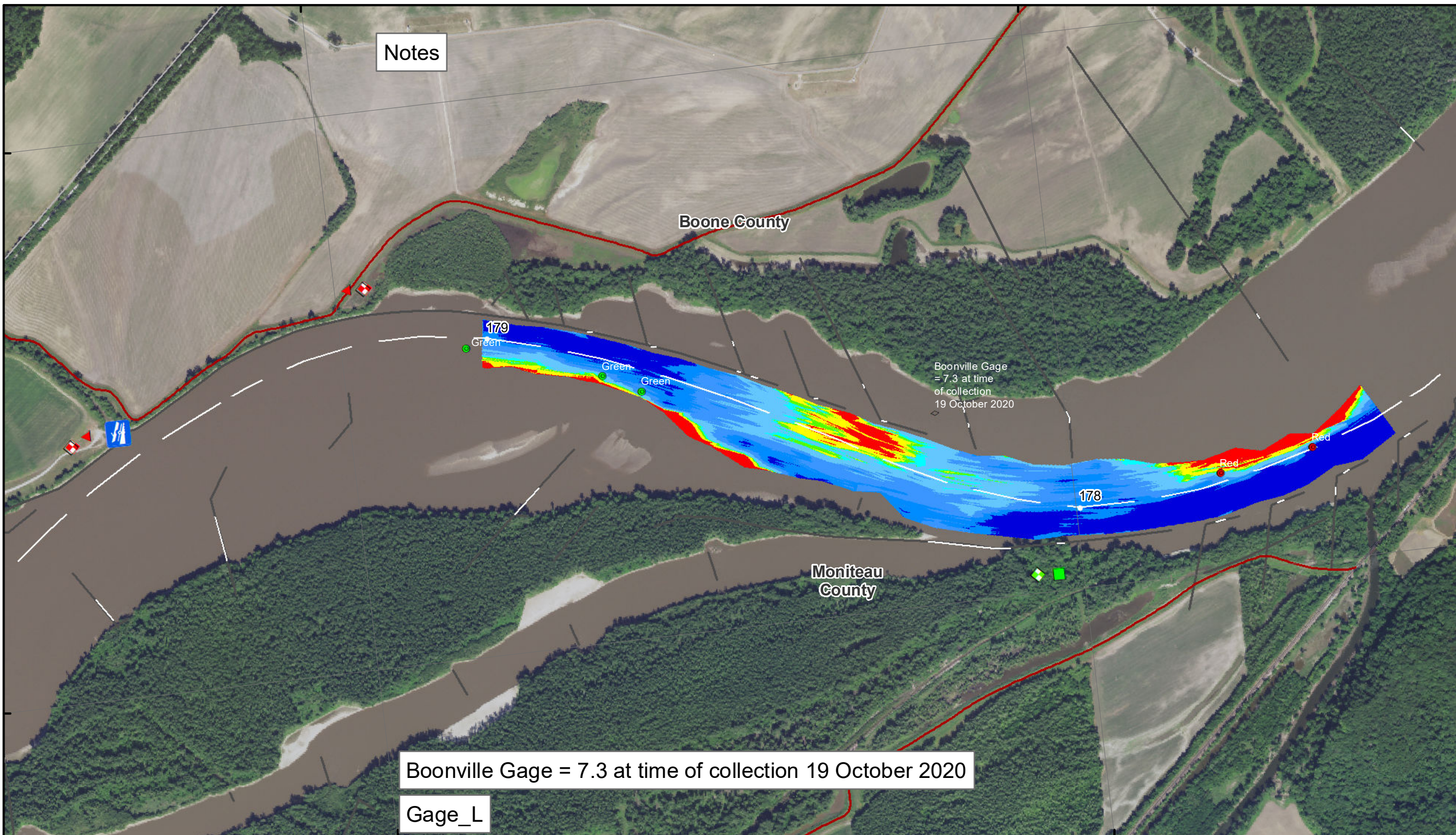
Boonville Gage = 7.3 at time of collection 19 October 2020

Boonville Gage = 7.3 at time of collection 19 October 2020

Gage_L

92°28'W

92°29'W



38°53'N

38°53'N

LEGEND

	< 8		< 8 ft		Green Passing		Green		AIS Green CAN
	8 - 9		8 - 9 ft		Red Passing		Red		AIS Red NUN
	9 - 9.5		9 - 10 ft		Green Crossing		Green CAN		Red CAN
	9.5 - 10		10 - 12 ft		Red Crossing		Red NUN		
	10 - 12		River Mile						
	12 - 14		Sailing Line						
	14 - 16		BSNP Structure						
	> 16		Levee						

Buoy

	AIS Green CAN
	AIS Red NUN
	Green CAN
	Red NUN

Vertical Datum:
Soundings are shown in feet and indicated depths are referenced to water surface at time of collection.

Horizontal Coordinate System:
World Geodetic System of 1984 (WGS84), projected to the Universal Transverse Mercator (UTM) Zone 15 North. Distance units in U.S. Survey Feet

Vertical Datum:
Soundings are shown in feet and indicated depths are referenced to water surface at time of collection.

The information depicted on this map represents the results of a survey conducted on the date indicated and can only be considered to represent the general condition existing at that time.

The location of navigation aids are based on and provided by the U.S. Coast Guard.



DISCLAIMER: The U.S. Army Corps of Engineers (USACE) provides this information as a service to the public. It is not intended to be used for any purpose other than that for which it was intended. The USACE makes no warranty, express or implied, regarding the accuracy, reliability, or completeness of the information. The user assumes all liability for any use of the information. The USACE is not responsible for any damage or loss resulting from the use of this information. The USACE is not responsible for any damage or loss resulting from the use of this information.

KANSAS CITY DISTRICT MISSOURI RIVER AREA OFFICE	
Submitted By:	MIRAO
Reviewed By:	MIRAO
Approved By:	MIRAO

Survey Information

MO_02_LMR
MO_02_LMR_20201019_CS_177_5_179_0_SORT
19 October 2020

Sheet Number
36 of 46